

Készítették: Albrecht Beáta, Kálmán Ernő, Sajó Imre építészmérnökök

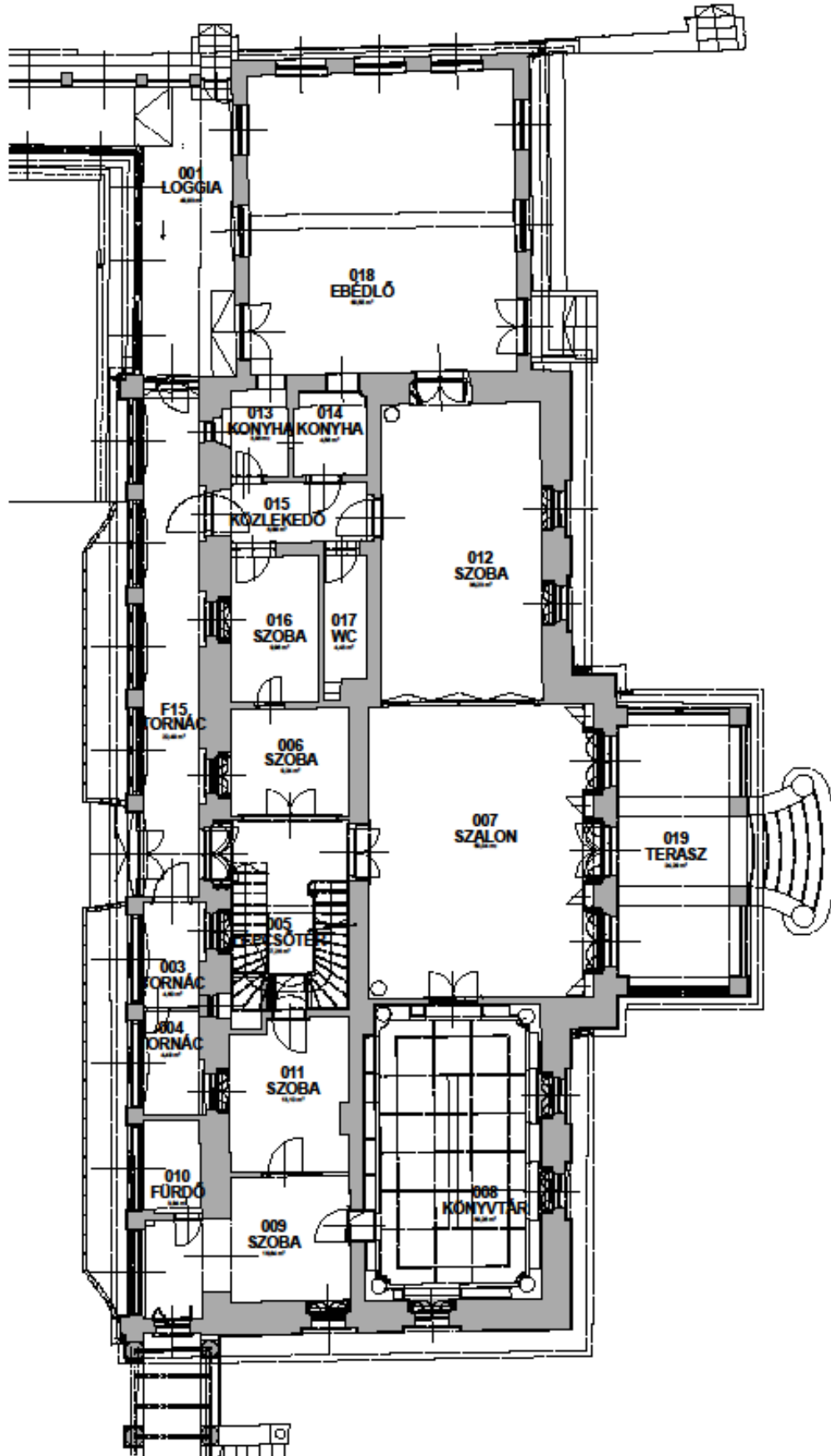
KEBELSBERG-KASTÉLY
Budapest, II. Templom utca 12-14.sz.



VÉDETT MŰEMLÉKI ÉRTÉK – HELYISÉGEK FOTÓDOKUMENTÁCIÓJA

Épületrészek és szintek szerint tagolva,
a fotók számozása a helyiségek számozásának megfelelően

Budapest, 2014. április hó.



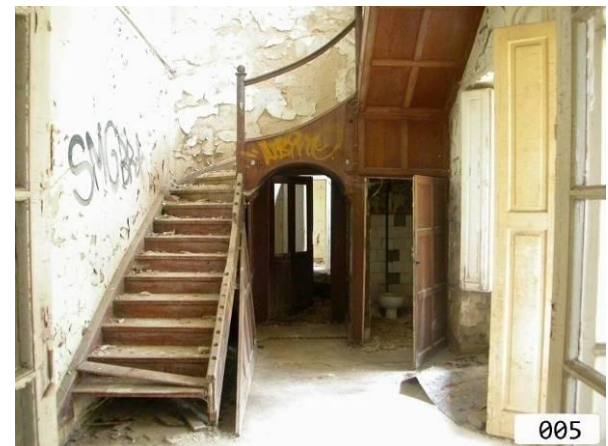
KASTÉLY FÖLDSZINT

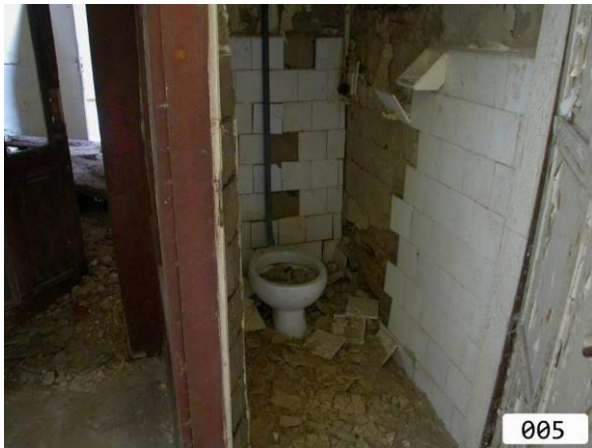






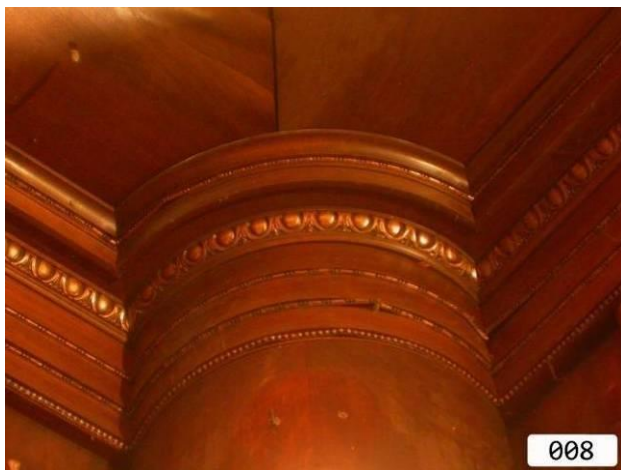
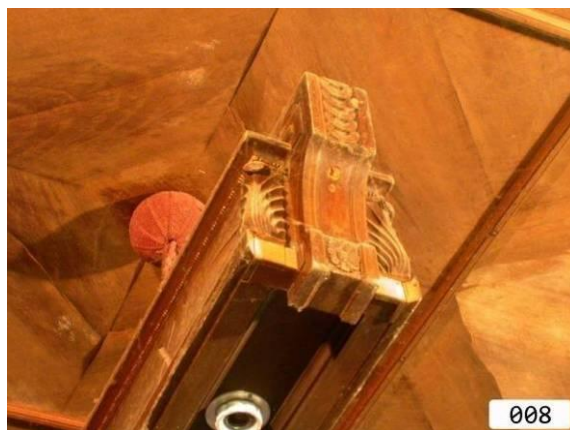




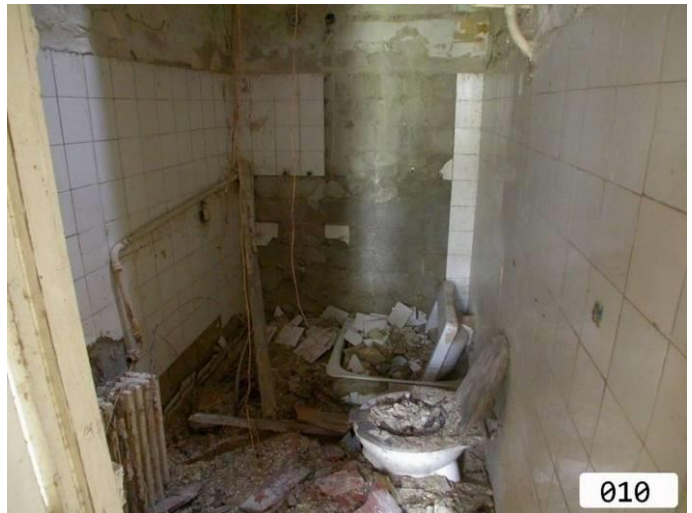








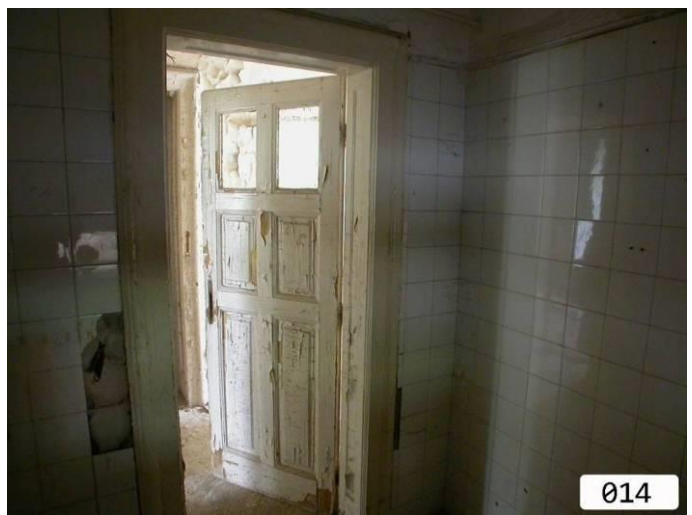








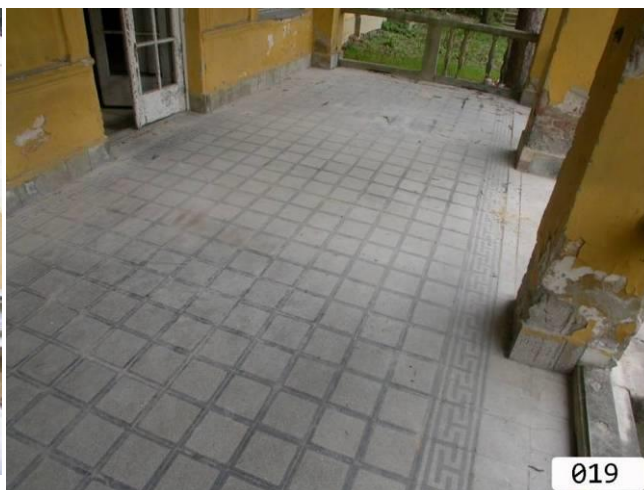


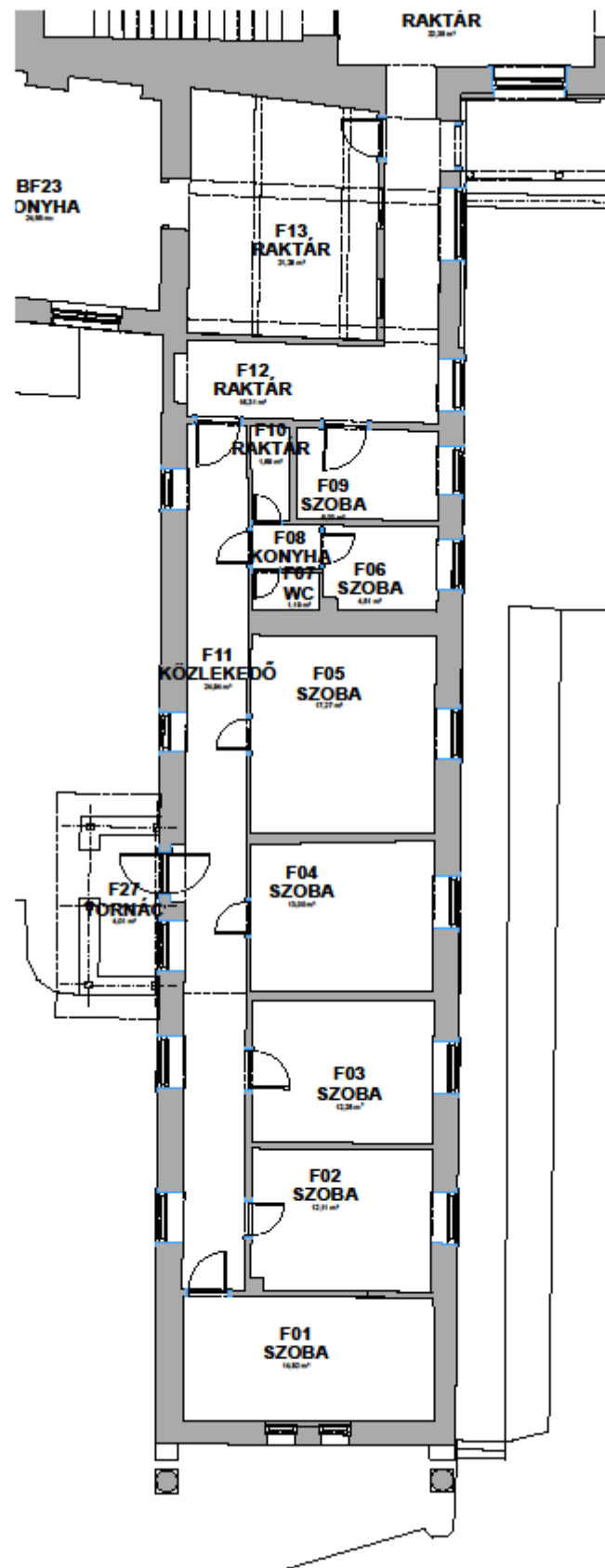






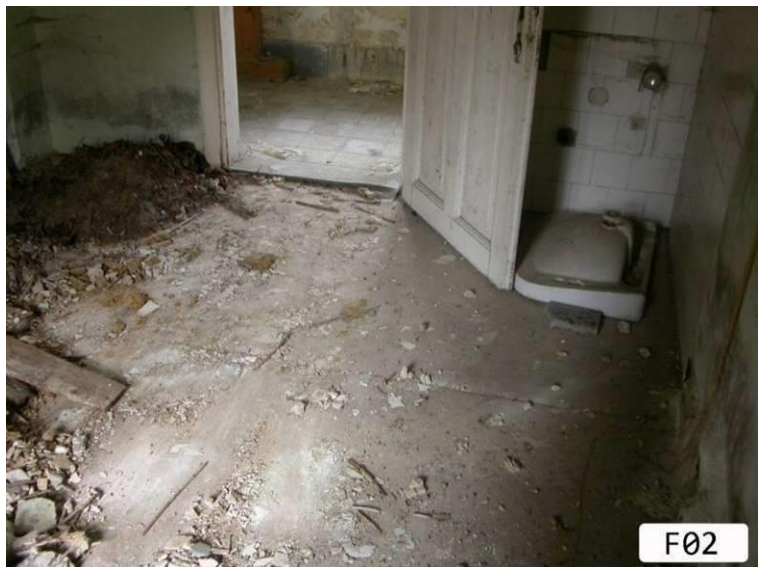






GAZDASÁGI ÉPÜLET FÖLDSZINT







F03



F03



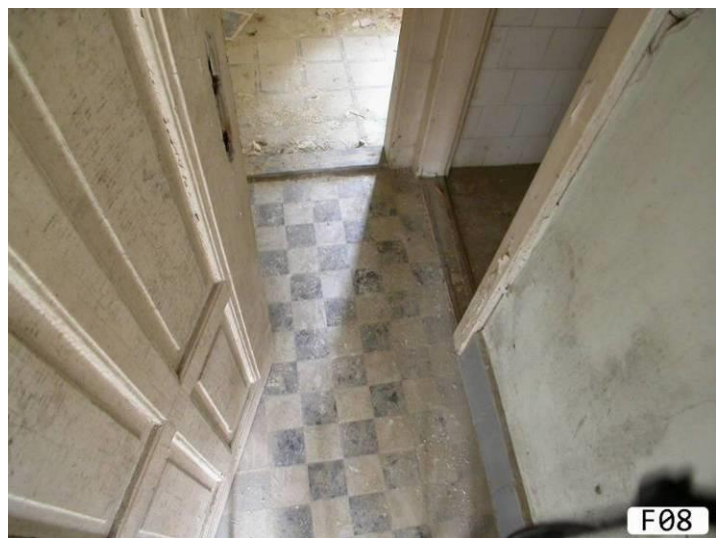
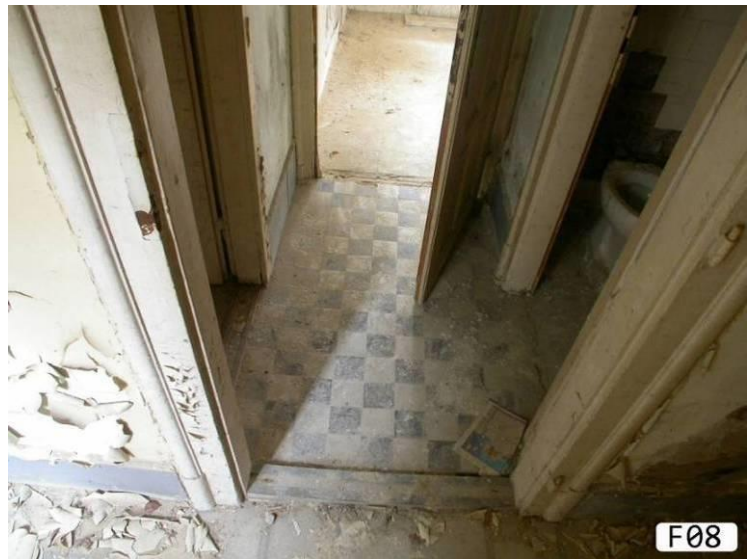
F03



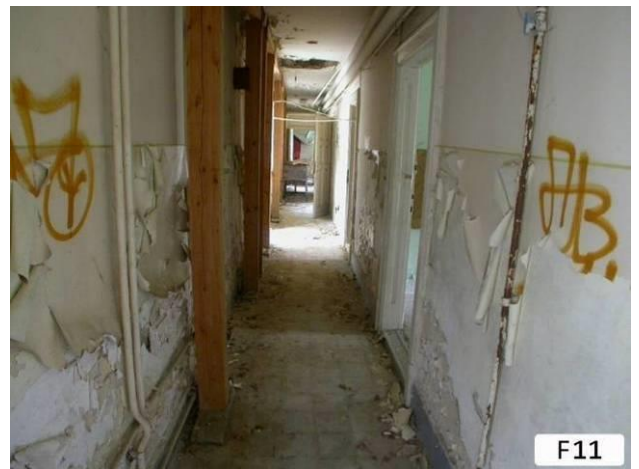


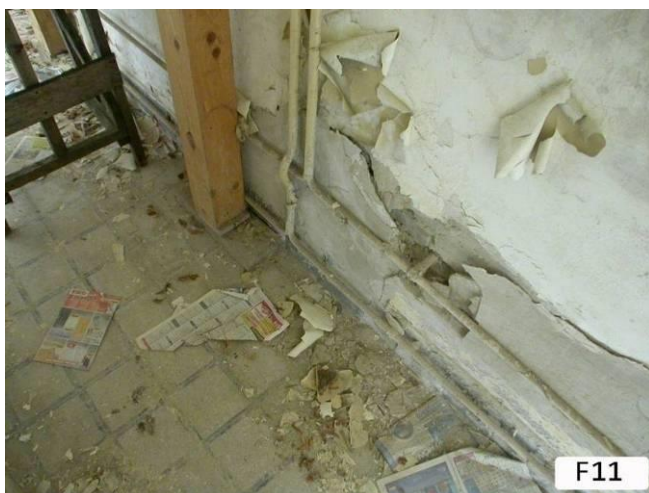




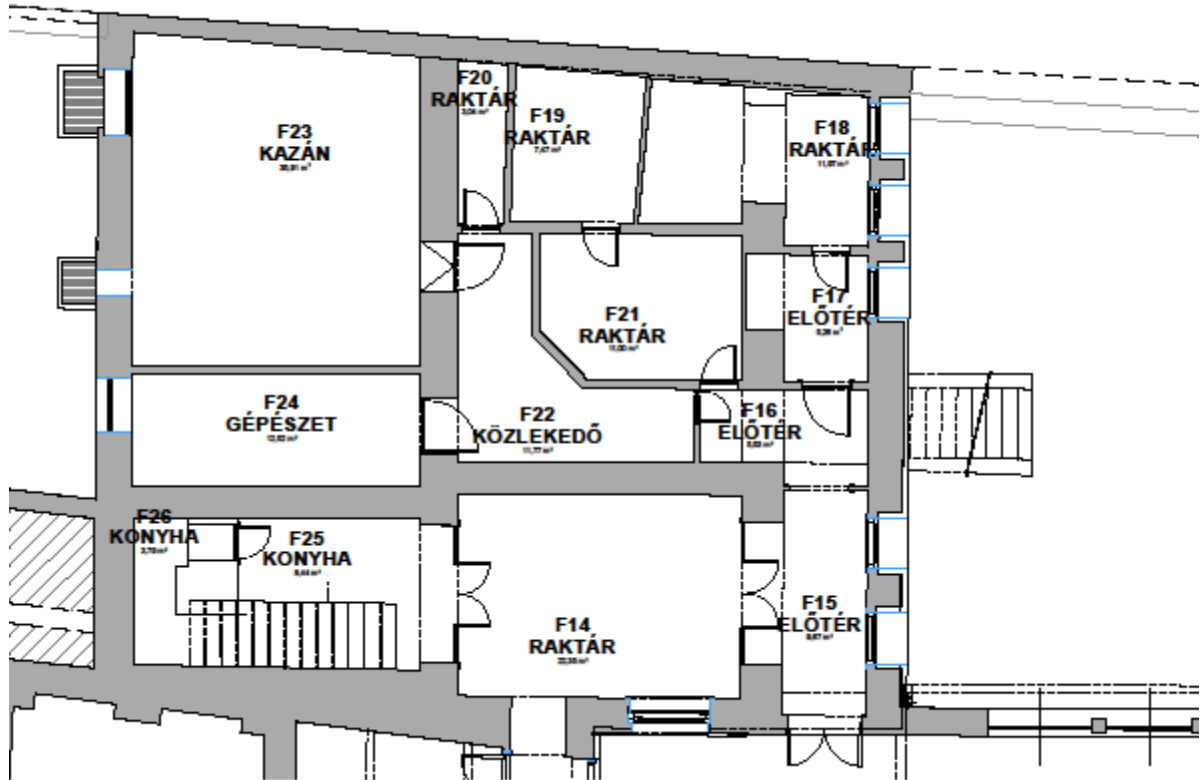












SVÁJCI-LAK VILLAÉPÜLET FÖLDSZINT







F16



F16



F16



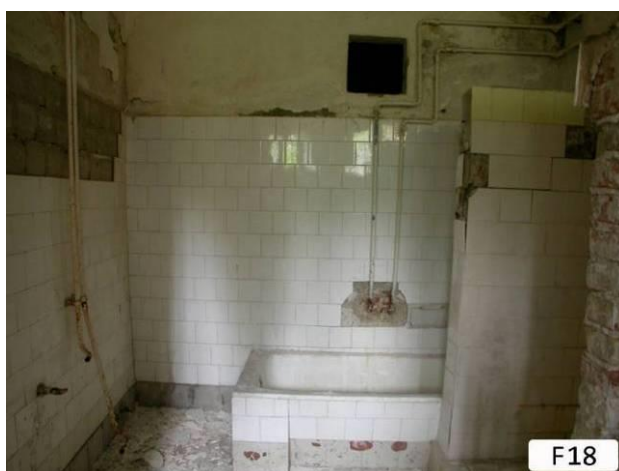
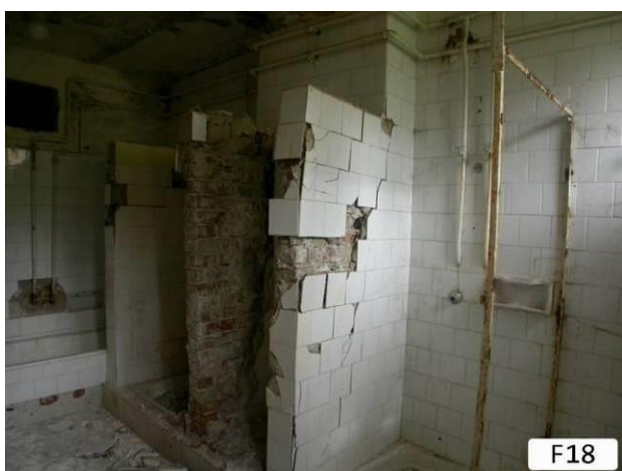
F17



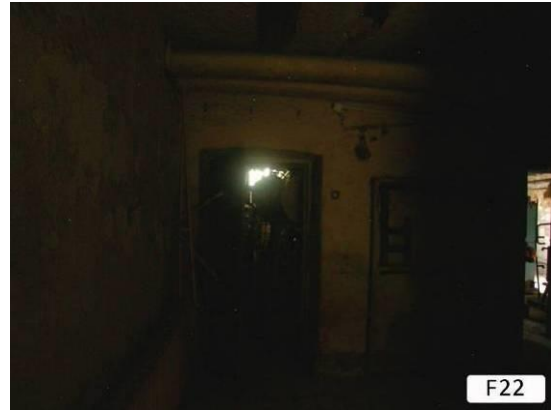
F17



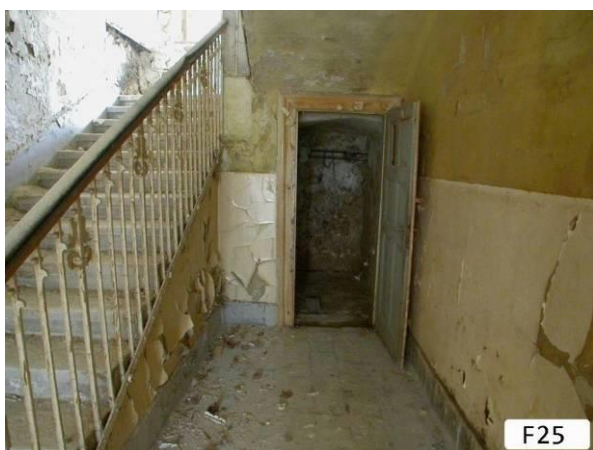
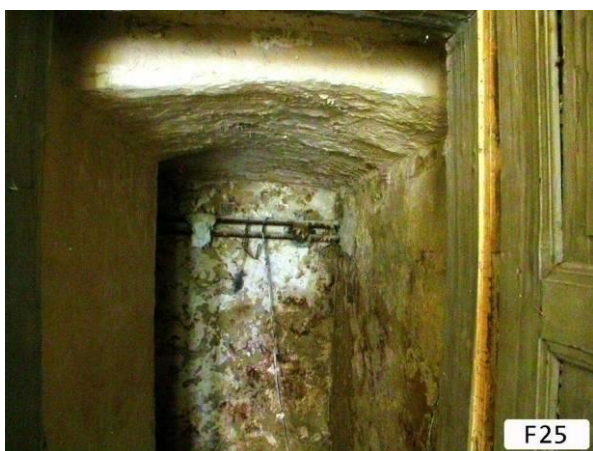
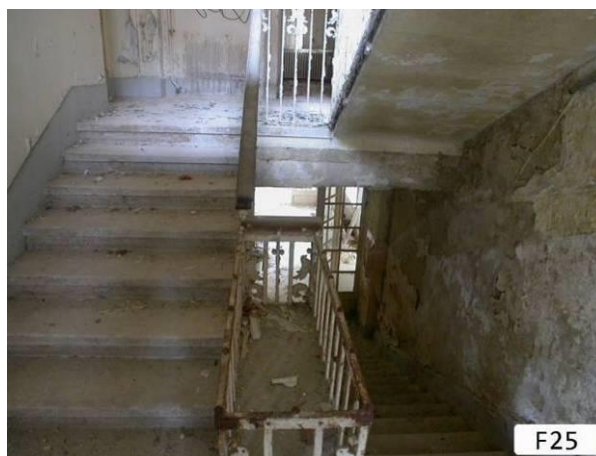
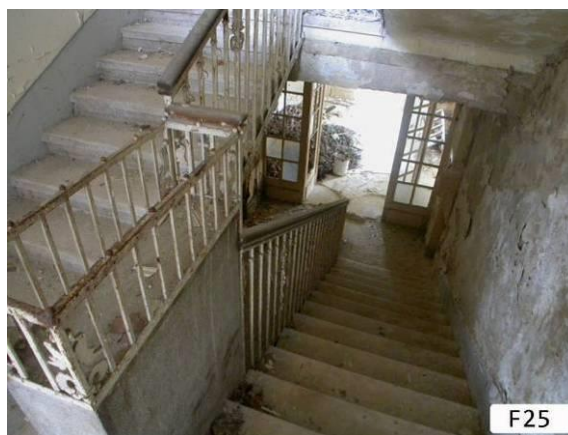
F17



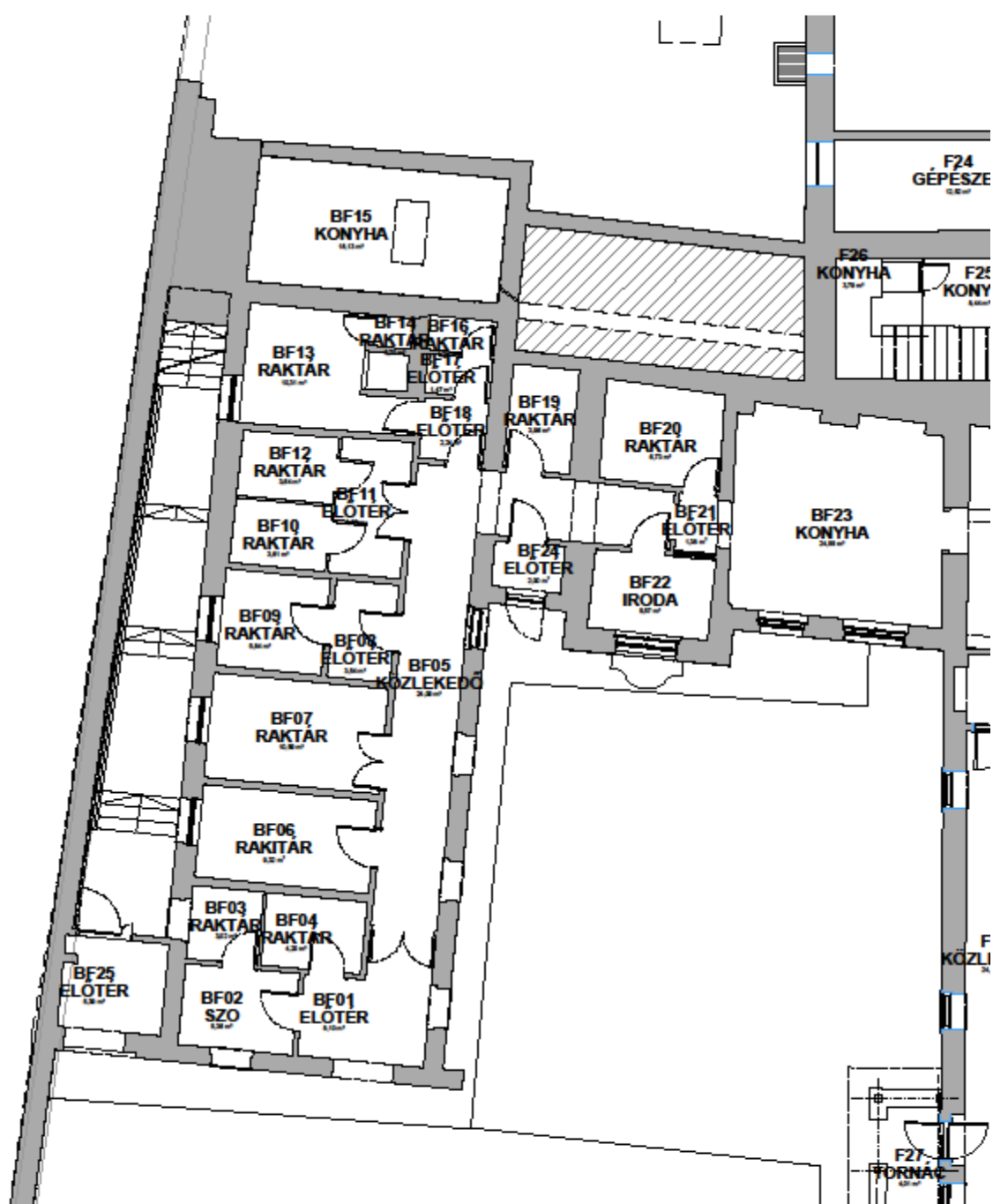




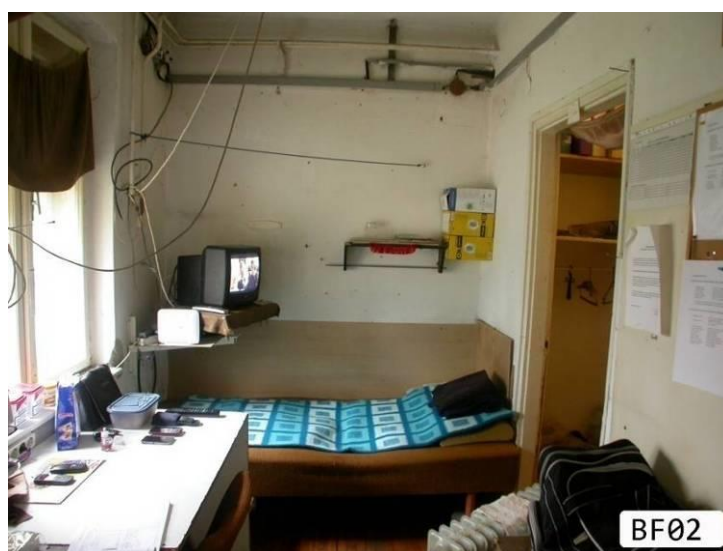




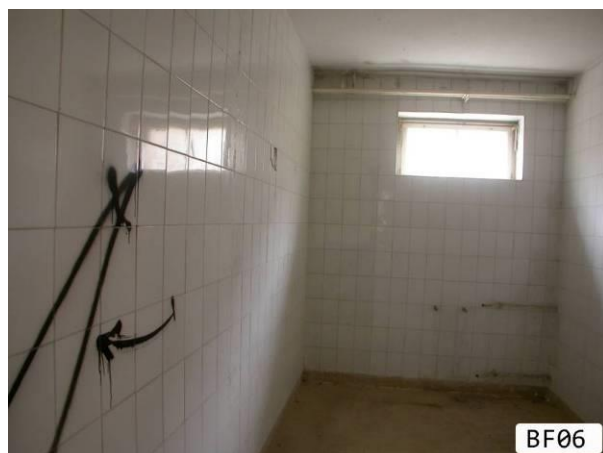
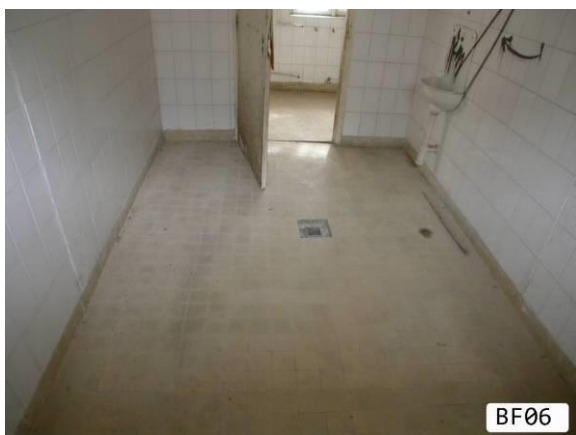


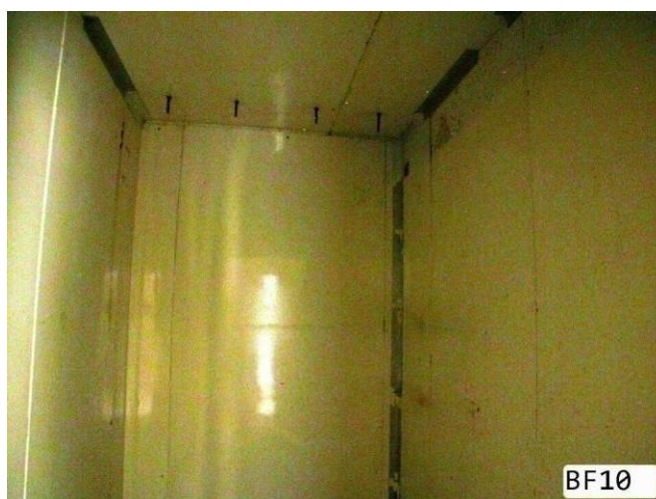
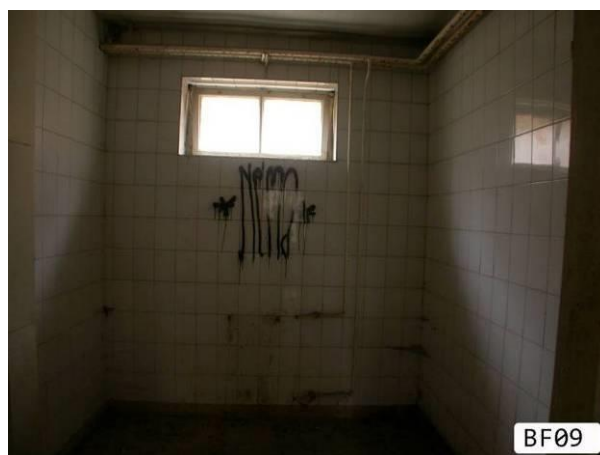
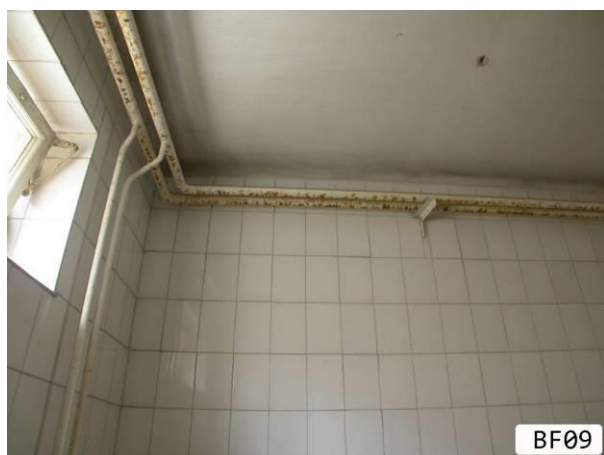
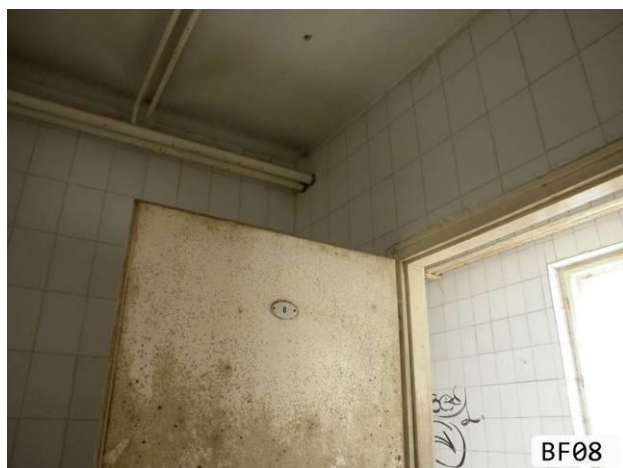


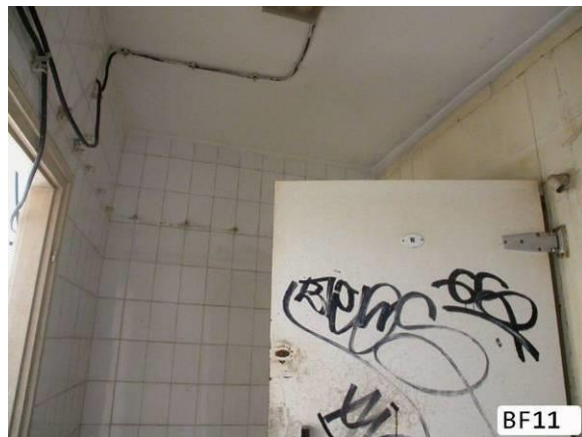
UTCAI ÉPÜLET FÖLDSZINT

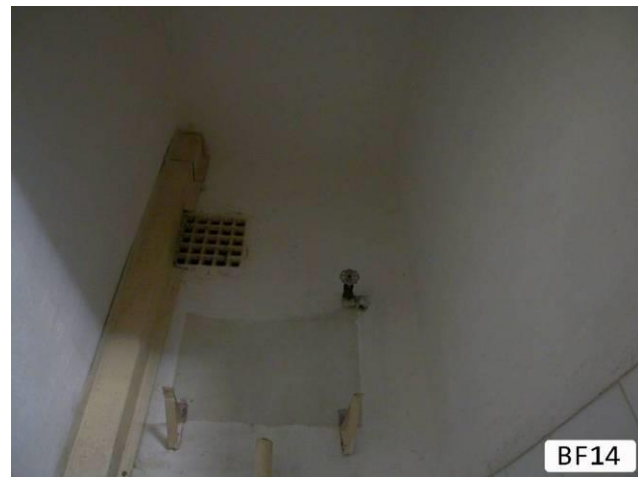


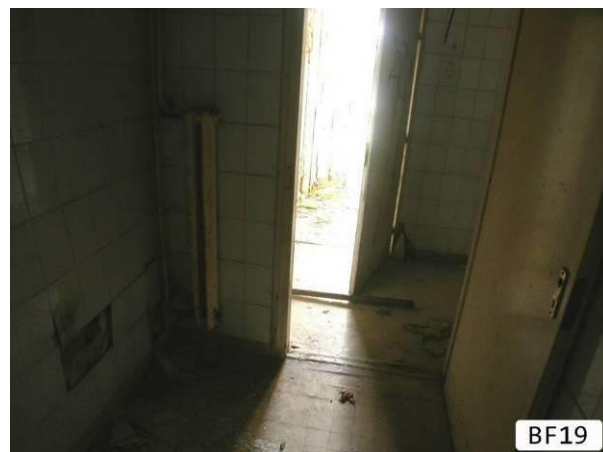
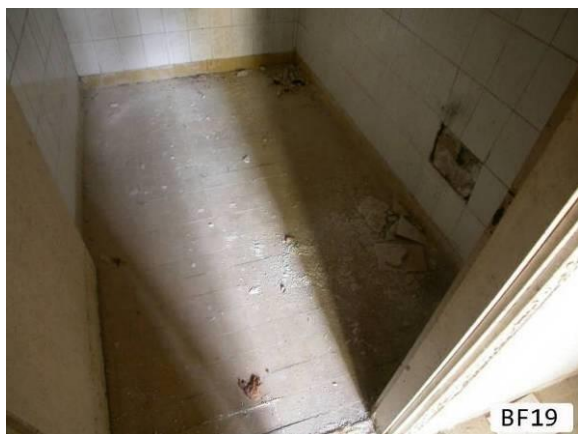




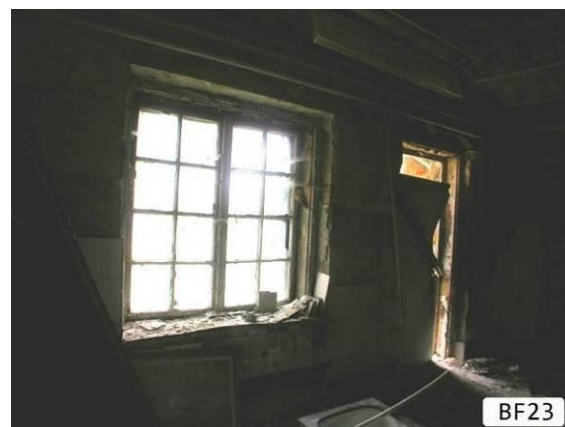
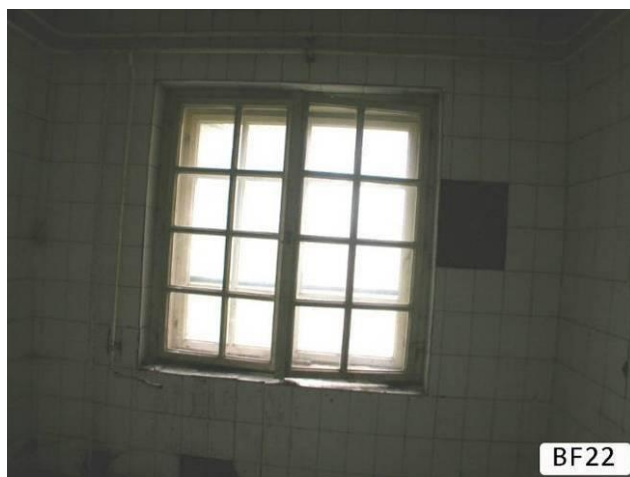


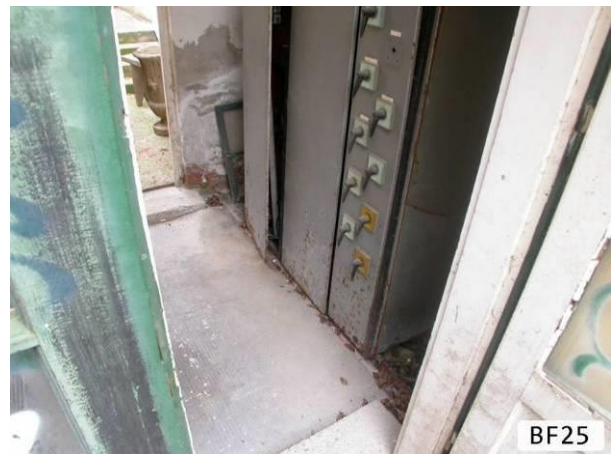


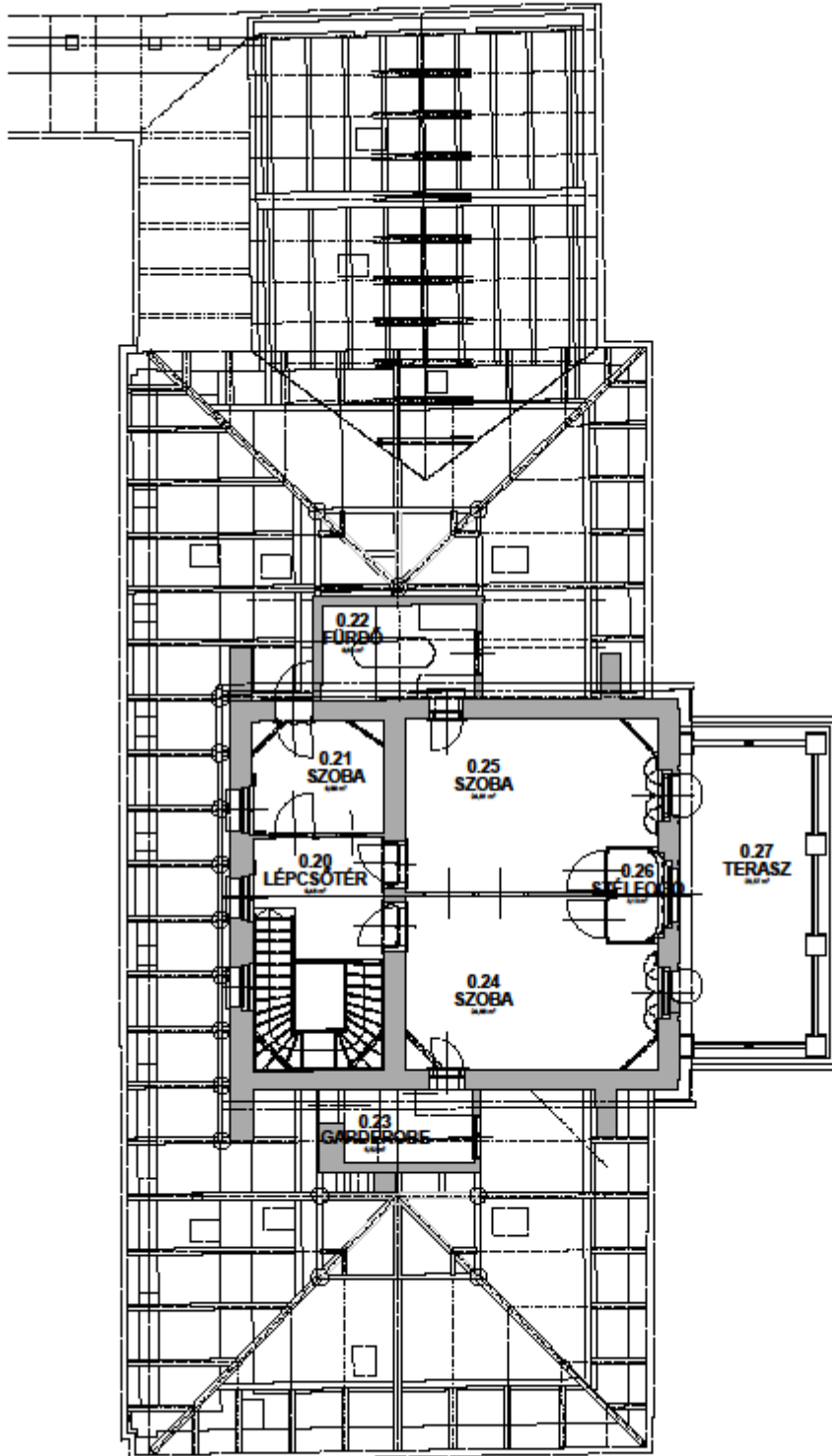


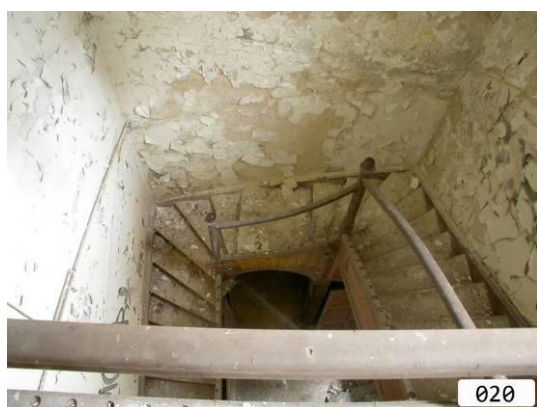


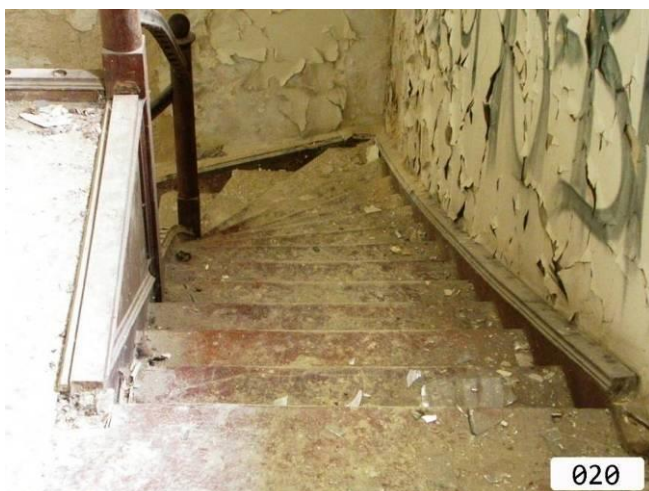


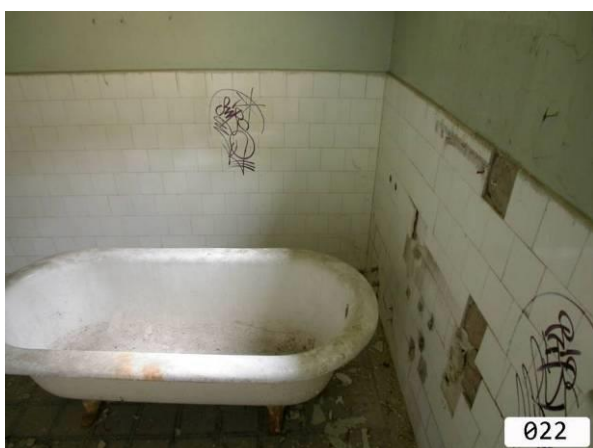




**KASTÉLY EMELET**





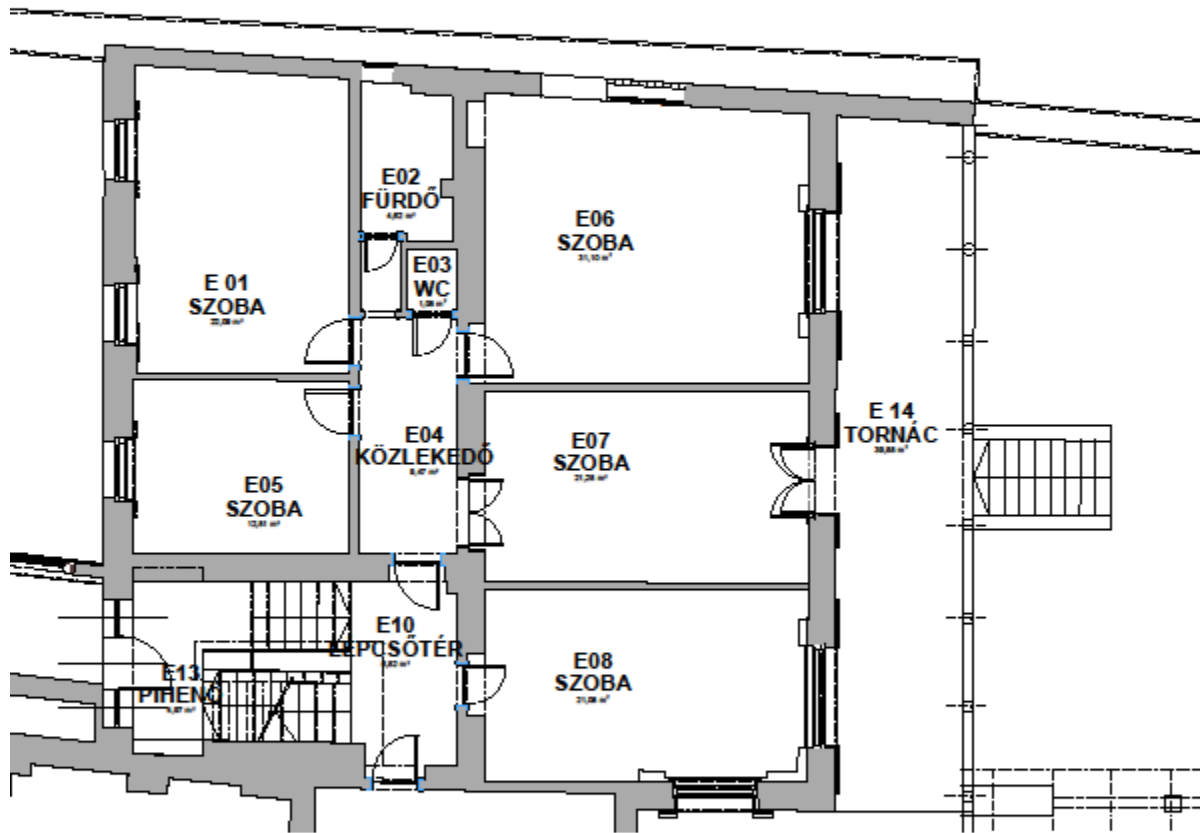








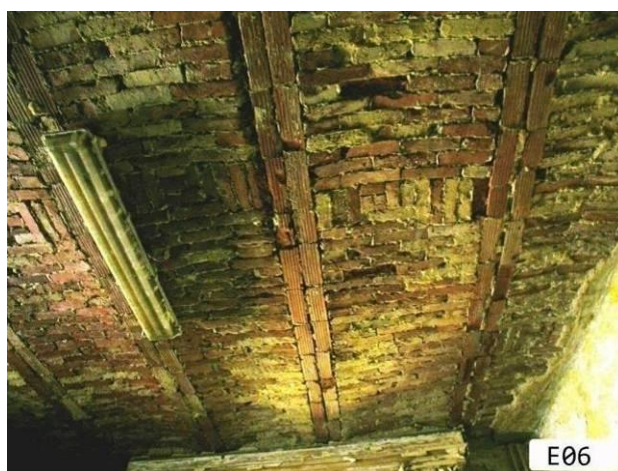




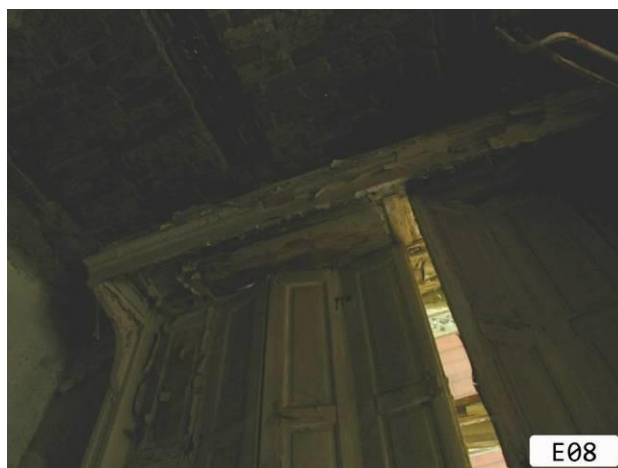
SVÁJCI LAK – VILLA EMELET

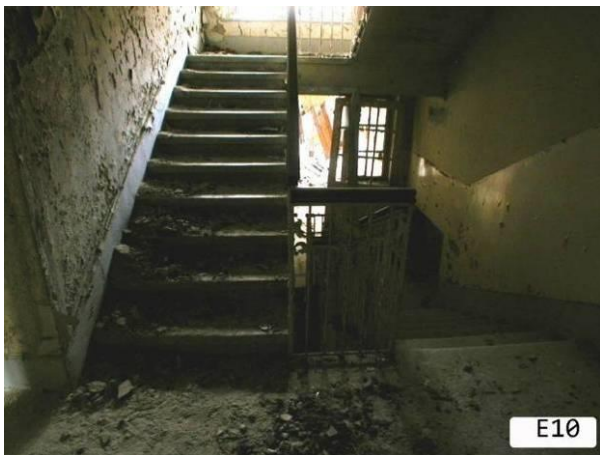




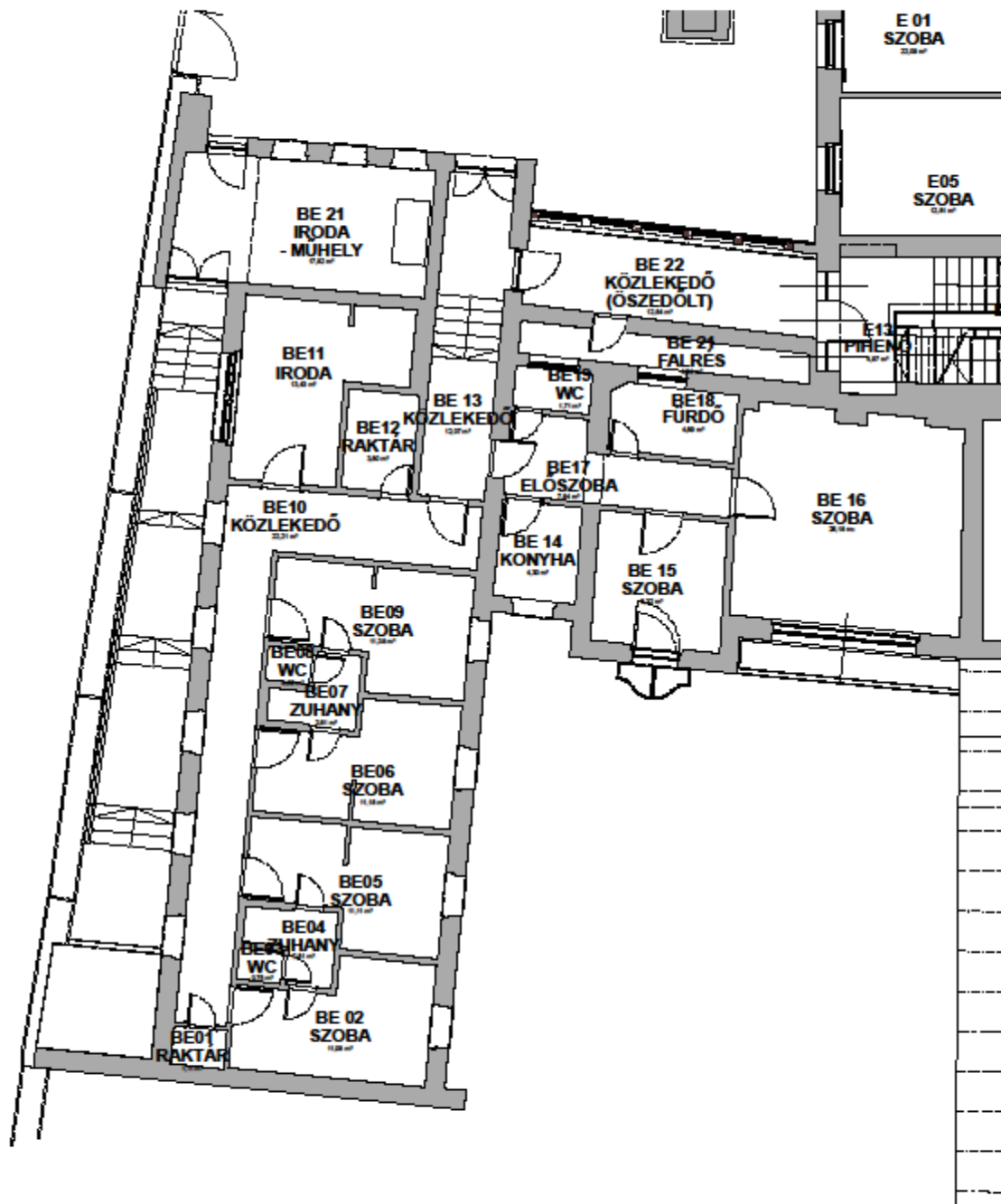












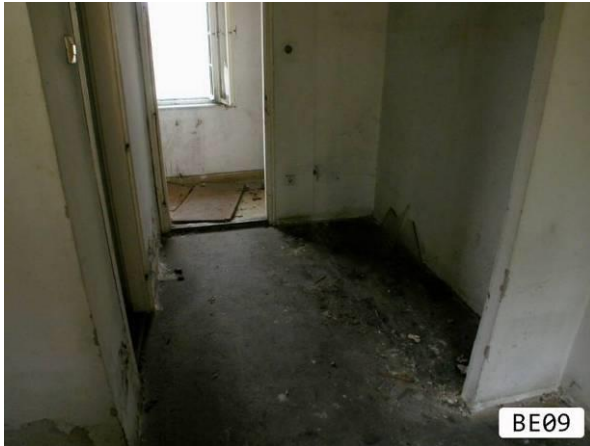
UTCAI ÉPÜLET EMELET







BE07



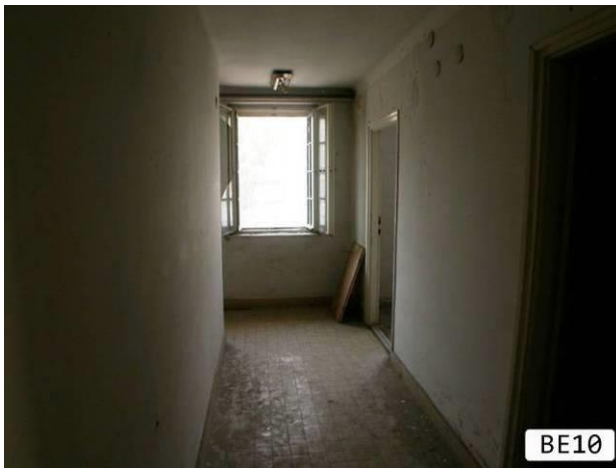
BE09



BE09



BE09



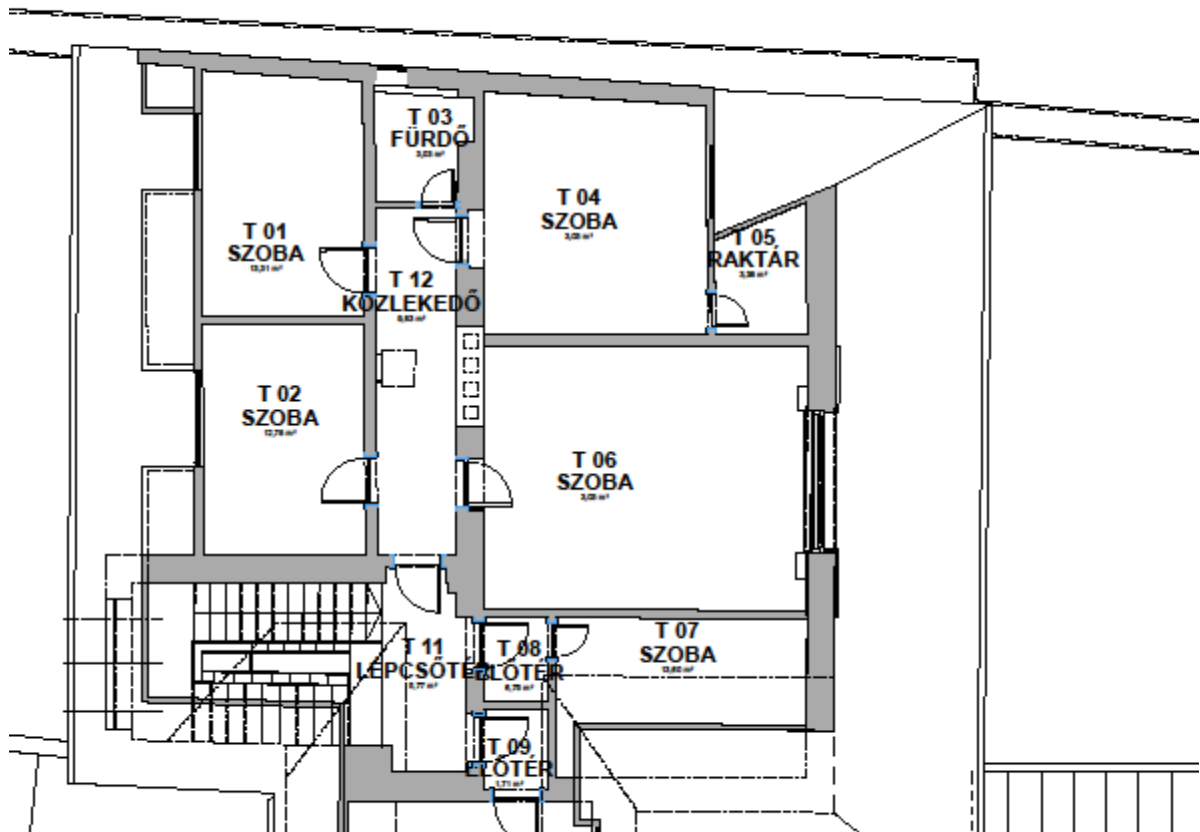












SVÁJCI LAK - VILLAÉPÜLET TETŐTÉR

